



**India Meteorological Department
(Ministry of Earth Sciences)
SPECIAL MESSAGE NO. 1 (BoB/05/2025)**

TIME OF ISSUE: 1330 HOURS IST

DATED: 17.08.2025

FROM: INDIA METEOROLOGICAL DEPARTMENT

(FAX NO. 24643965/24699216/24623220)

TO: CONTROL ROOM, NDM, MINISTRY OF HOME AFFAIRS (FAX.NO. 23093750)

CONTROL ROOM NDMA (FAX.NO. 26701729)

CABINET SECRETARIAT (FAX.NO.23012284, 23018638)

PS TO HON'BLE MINISTER FOR S & T AND EARTH SCIENCES (FAX NO.23316745)

SECRETARY, MOES (FAX NO. 24629777)

H.Q. (INTEGRATED DEFENCE STAFF AND CDS) (FAX NO. 23005137/23005147)

DIRECTOR GENERAL, DOORDARSHAN (23385843)

DIRECTOR GENERAL, AIR (23421105, 23421219)

PIB MOES (FAX NO. 23389042)

UNI (FAX NO. 23355841)

D.G. NATIONAL DISASTER RESPONSE FORCE (NDRF) (FAX NO. 26105912, 2436 3260)

DIRECTOR, PUNCTUALITY, INDIAN RAILWAYS (FAX NO. 23388503)

CHIEF SECRETARY, ODISHA (FAX NO. 0674-2536660)

CHIEF SECRETARY, WEST BENGAL (FAX NO. 033-22144328)

CHIEF SECRETARY, ANDAMAN & NICOBAR ISLANDS (FAX NO. 03192-232656)

CHIEF SECRETARY, TAMIL NADU (FAX NO. 044-25672304)

CHIEF SECRETARY, ANDHRA PRADESH (FAX NO. 0863-2441029)

CHIEF SECRETARY, PUDUCHERRY (FAX NO. 0413-2334145)

Subject: Low Pressure Area formed over westcentral and adjoining northwest Bay of Bengal off north Andhra Pradesh & south Odisha coasts

A Low Pressure Area formed over westcentral and adjoining northwest Bay of Bengal off north Andhra Pradesh & south Odisha coasts at 0830 hours IST of today, the 17th August, 2025.

It is likely to move west-northwestwards and concentrate into a depression during next 24-hours and cross south Odisha-north Andhra Pradesh coasts around forenoon of 19th August, 2025.

Warnings:

(i) Rainfall Warning:

Andhra Pradesh: Light to moderate rainfall at most places with **heavy to very heavy rainfall** at a few places with **extremely heavy rainfall (≥ 20 cm)** at isolated places is very likely on 17th & 18th and heavy to very heavy rainfall at isolated places on 19th August.

Odisha: Light to moderate rainfall at most places with **heavy to very heavy rainfall** at isolated places on 17th and 18th over Odisha with **extremely heavy rainfall** at isolated places is very likely over south Odisha on 18th and **heavy rainfall** at isolated places on 19th August.

Chhattisgarh: Light to moderate rainfall at most places with **heavy to very heavy rainfall** at isolated places on 17th and 18th over Chhattisgarh with **extremely heavy rainfall** at isolated places is likely over south Chhattisgarh on 18th and **heavy rainfall** at isolated places on 19th August.

Telangana: Light to moderate rainfall at most places with **heavy to very heavy rainfall** at isolated places is likely during 17th to 19th with **extremely heavy rainfall** at isolated places on 18th August.

Rayalaseema: Light to moderate rainfall at most places with **heavy to very heavy rainfall** at isolated places on 17th and **heavy rainfall** at isolated places on is likely 18th August.

Vidarbha: Light to moderate rainfall at most places with **heavy to very heavy rainfall** at isolated places during 17th to 19th August and **heavy rainfall** at isolated places is very likely on 20th August.

Marathwada: Light to moderate rainfall at most places with **heavy to very heavy rainfall** at isolated places on 17th & 18th August and **heavy rainfall** at isolated places is likely on 19th August.

Madhya Maharashtra: Light to moderate rainfall at most places with **heavy to very heavy rainfall** at a few places with **extremely heavy rainfall** at isolated places is likely during 17th to 19th August.

South Madhya Pradesh: Light to moderate rainfall at most places with **heavy to very heavy rainfall** at isolated places is likely during 17th to 19th August.

Gujarat: Light to moderate rainfall at most places with **heavy to very heavy rainfall** at isolated places on 17th to 20th with **extremely heavy rainfall** at isolated places is likely on 19th & 20th August.

(ii) Wind Warning:

- ❖ Squally weather with wind speed reaching 40-50 kmph gusting to 60 kmph is prevailing over southwest, central and adjoining northwest Bay of Bengal. It is likely to increase and becoming Squally wind speed reaching 45-55 kmph gusting to 65 kmph over westcentral and adjoining northwest and eastcentral Bay of Bengal on 18th & 19th August.
- ❖ Squally wind speed reaching 40-50 kmph gusting to 60 kmph is likely along & off Andhra Pradesh and Odisha coasts on 17th August and along & off North Andhra Pradesh-Odisha-West Bengal coasts from 18th to 19th August.

(iii) Sea Condition:

- ❖ **Sea condition is very likely to be rough** over southwest, central and adjoining northwest Bay of Bengal and along & off Andhra Pradesh -Odisha coasts on 17th and **rough to very rough** over westcentral and adjoining northwest and eastcentral Bay of Bengal and along & off North Andhra Pradesh-Odisha-West Bengal coasts on 18th & 19th August.

(iv) Fishermen Warning:

- Fishermen are advised not to venture into southwest, central and adjoining northwest Bay of Bengal and along & off Andhra Pradesh -Odisha coasts till 19th August.
- Those out at sea may return to coast by today evening.

(v) Impact Expected and Action Suggested Andhra Pradesh, Odisha, Chhattisgarh, Telangana, Maharashtra, south Madhya Pradesh and Gujarat due to heavy rainfall and squally winds

Impact expected:

- ❖ Breaking of tree branches, uprooting of small trees like banana, papaya, drum sticks. Strong wind and rain may damage plantation, horticulture and standing crops.
- ❖ Partial damage to vulnerable structures due to strong winds and rain.
- ❖ Minor damage to kutcha houses/walls, huts and roads due to heavy rain.
- ❖ Loose objects may fly.
- ❖ Onshore and offshore operations may get affected.
- ❖ Small ships, trawlers and boats may be affected.
- ❖ Road and rail traffic may be affected due to heavy rain and squally winds.
- ❖ There could be localised landslides, mudslides, landslips, water logging, inundation and flooding over low lying areas.
- ❖ Occasional reduction in visibility due to heavy rainfall.
- ❖ Helicopter services may get affected.

Action suggested:

- ❖ People are advised to keep a watch on the weather for worsening conditions and be ready to move to safer places accordingly.

- ❖ Take safe shelters; do not take shelter under trees, as there could be lightning.
- ❖ In case of expected lightning, unplug electrical/ electronic appliances, immediately, get out of water bodies and keep away from all the objects that conduct electricity.
- ❖ Tourism and recreational activities to be regulated.
- ❖ Onshore and offshore activities to be judiciously regulated.
- ❖ Helicopter services to be regulated.
- ❖ Follow the bulletins issued by Central Water Commission for the information about flood.

Next bulletin will be issued at 1230 hours IST of tomorrow, the 18th August, 2025.

(Ananda Kumar Das)
Scientist-F, RSMC & IMD, New Delhi

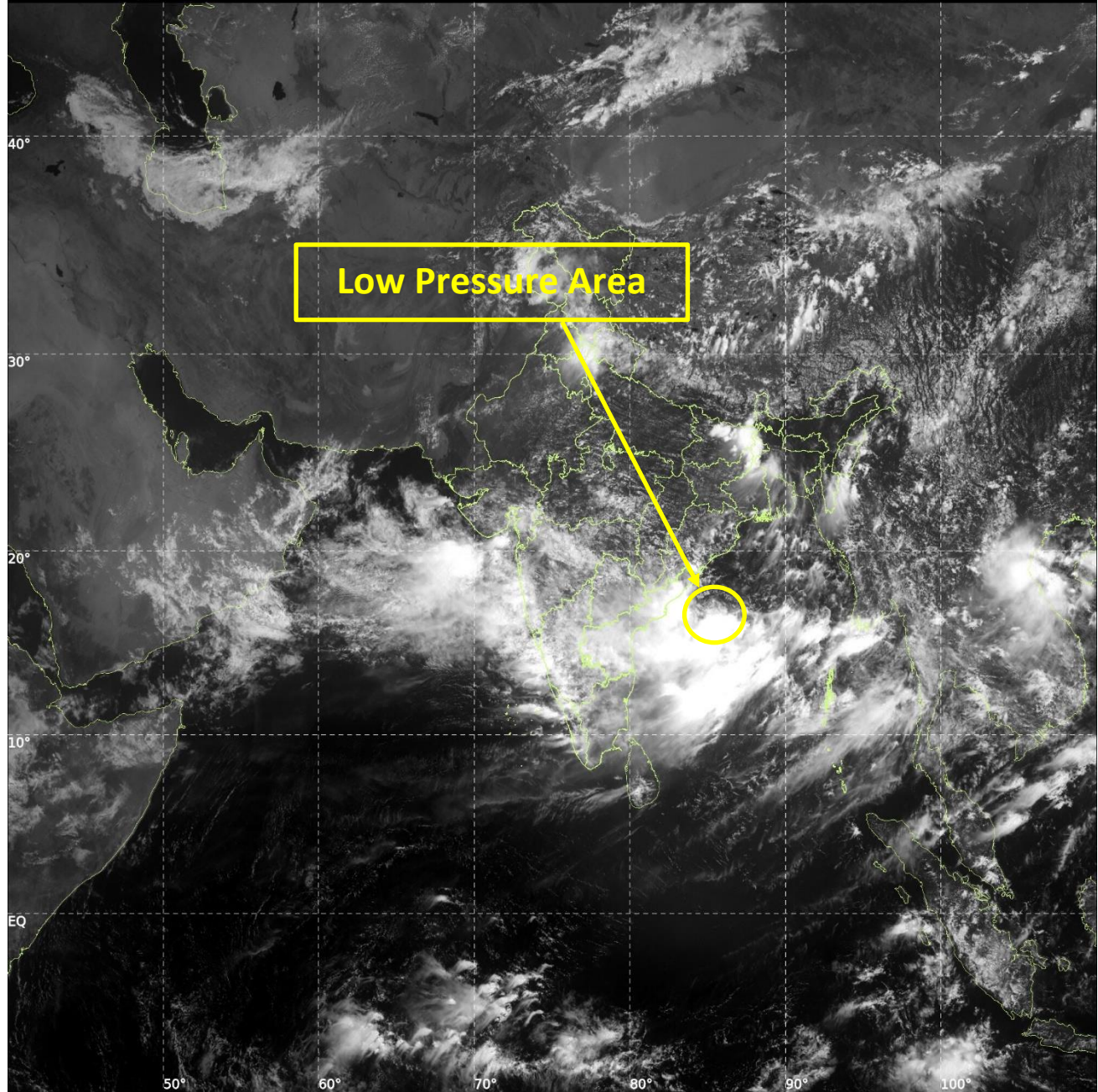
Copy to: ACWC Kolkata/ACWC Chennai/CWC Bhubaneswar/CWC Vishakhapatnam/Meteorological Centres- Port Blair/ Itanagar/ Kohima/ Agartala/ Gangtok/ Imphal/ Aizwal/ Shillong/ Gangtok/ Regional Meteorological Centre Guwahati



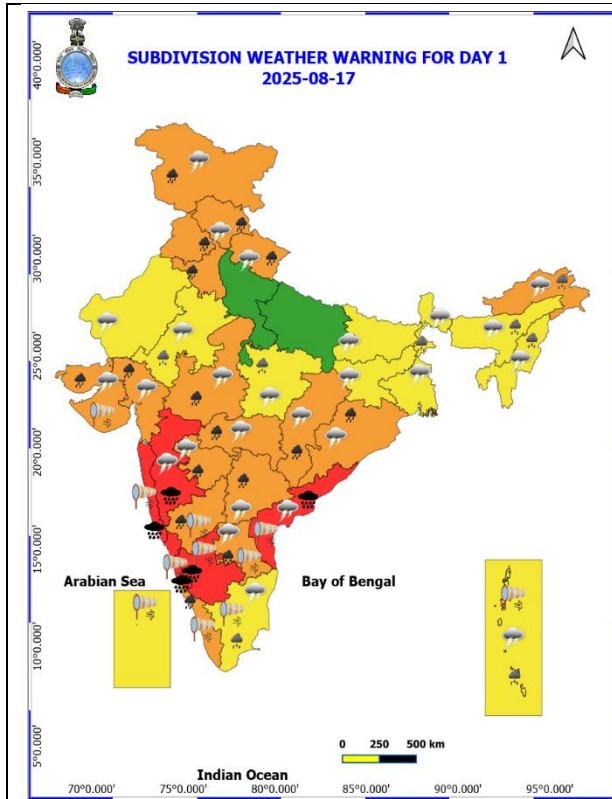
INSAT-3DS IMG, Visible Count @ 0.65 μm
GMT:17-08-2025/(0600-0627) IST:17-08-2025/(1130-1157)
L1C MERCATOR (LINEAR STRETCH: 0.5%)

68

486

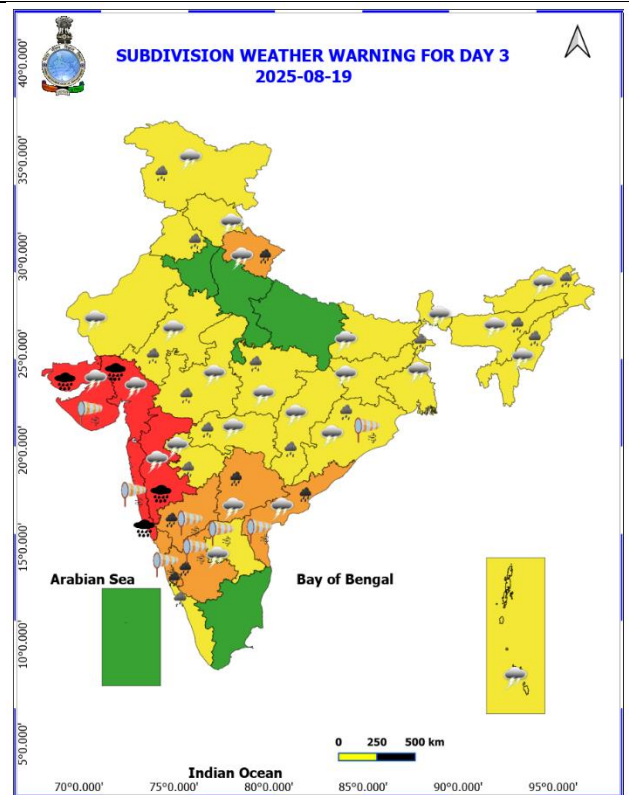
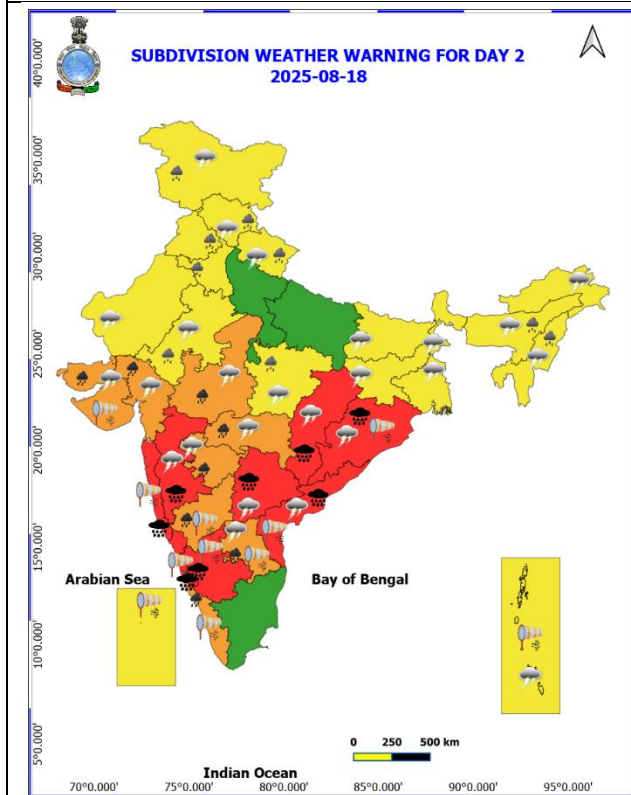


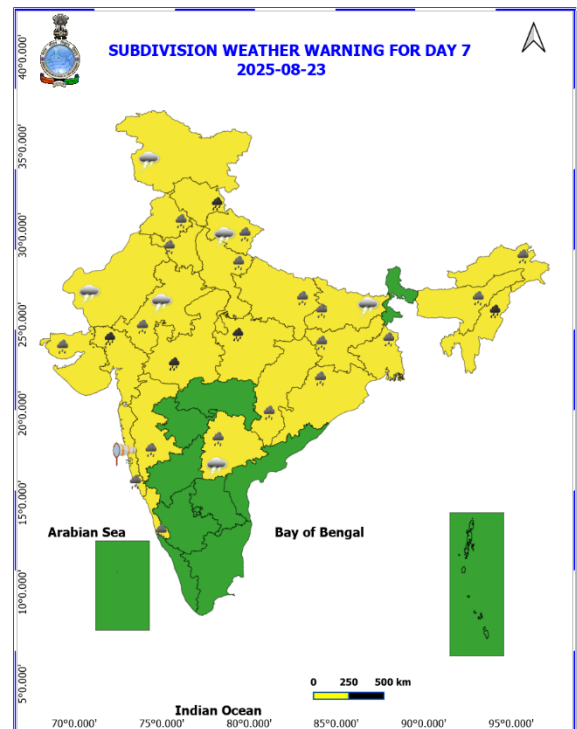
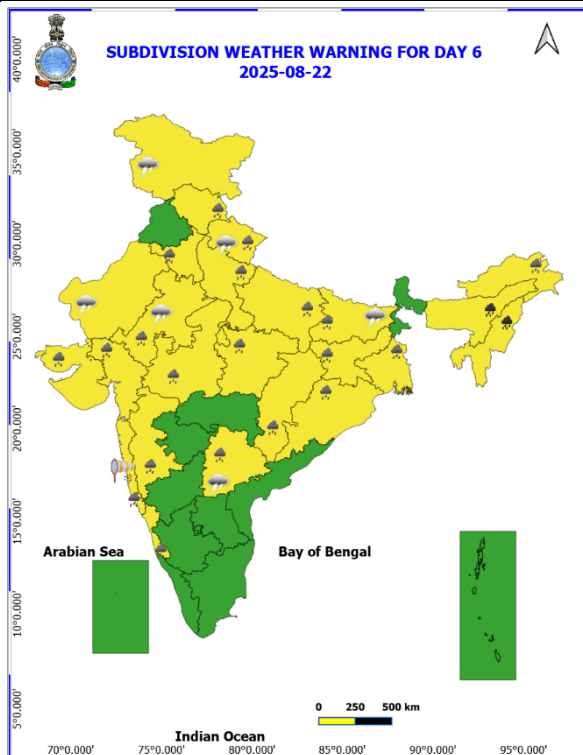
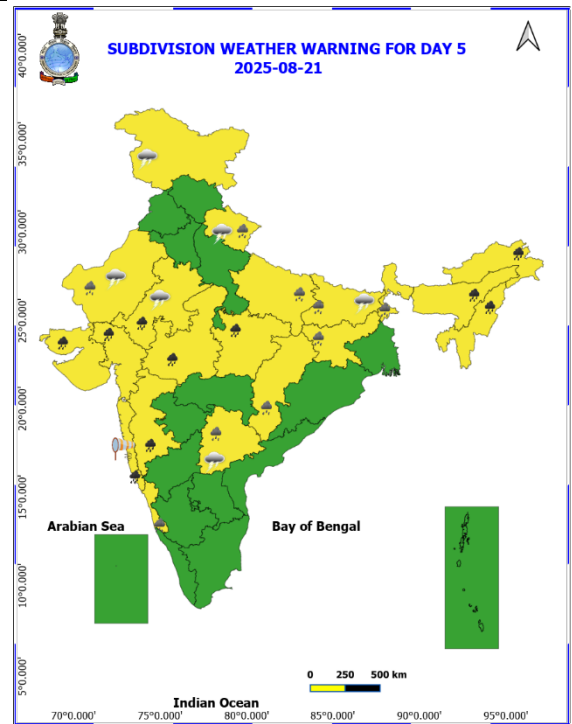
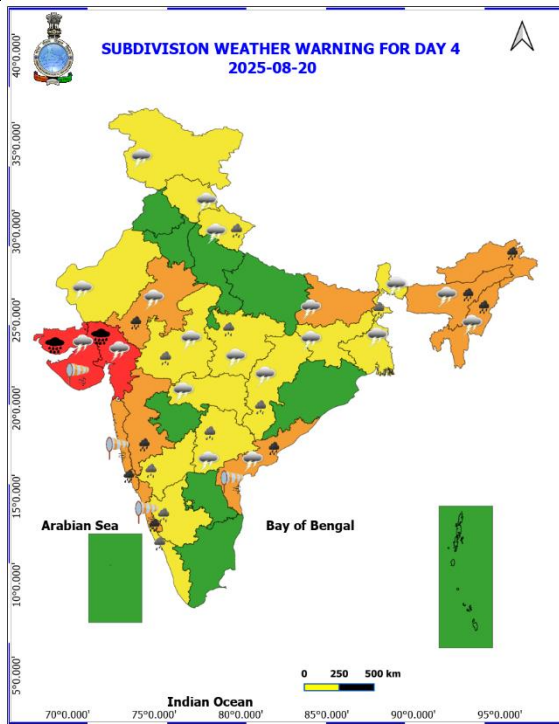
WEATHER WARNING GRAPHICS



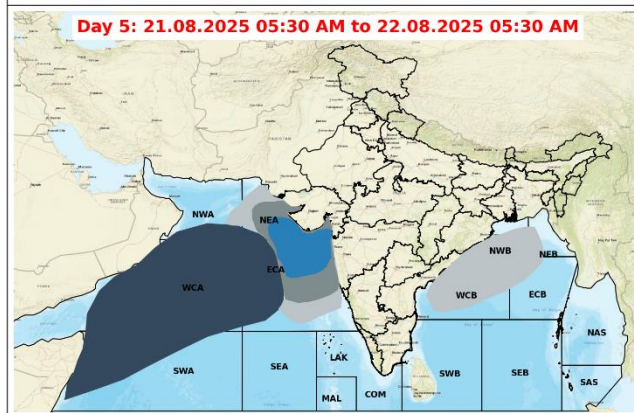
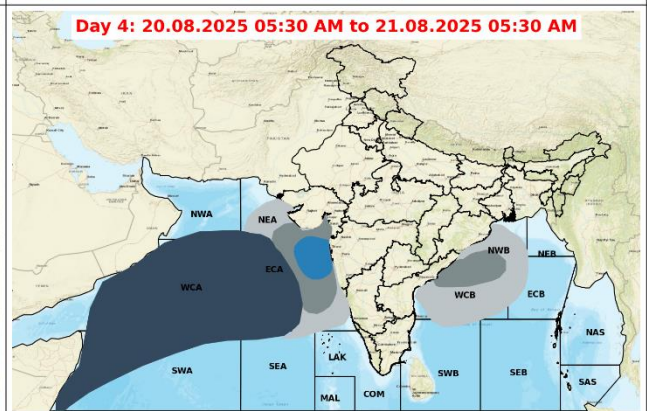
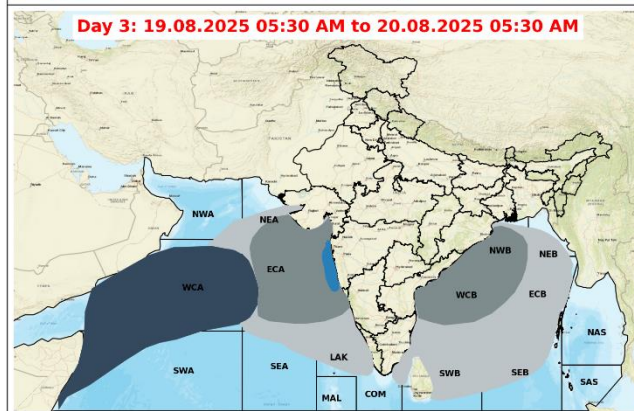
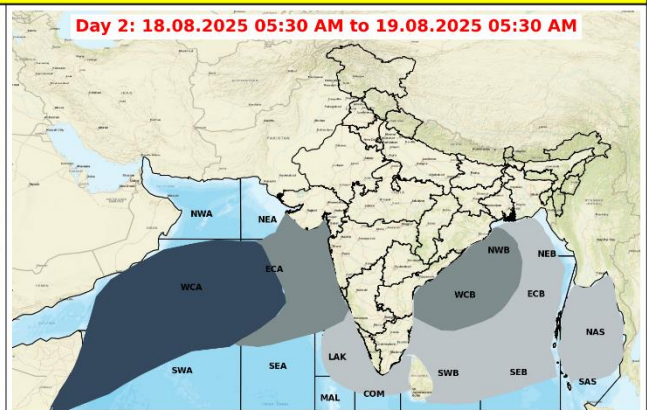
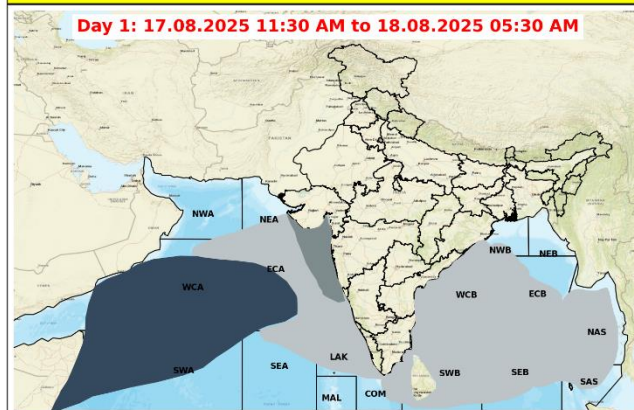
Subdivision Colour

- NO WARNING
- WATCH (BE UPDATED)
- ALERT (BE PREPARED TO TAKE ACTION)
- WARNING (TAKE ACTION)





Fishermen Warning Graphics



Legend

Squally Weather with wind speed 35-45 kmph gusting to 55 kmph	Squally wind with speed 55-65 kmph gusting to 75 kmph
Squally Weather with wind speed 40-50 kmph gusting to 60 kmph	CS with Gale winds with speed 60-80 kmph gusting to 90 kmph
Squally Weather with wind speed 45-55 kmph gusting to 65 kmph	SCS with Gale wind speed 90-110 kmph gusting to 120 kmph
Squally wind with speed 45-55 kmph gusting to 65 kmph	VSCS with Gale wind speed 120-165 kmph gusting to 185 kmph
Squally wind with speed 50-60 kmph gusting to 70 kmph	ESCS with Gale wind speed 165-220 kmph gusting to 245 kmph

Fishermen are advised not to venture into the marked areas.